

# Electronic Stethoscope

(Medical device approval No. : 229AFBZX00007000)

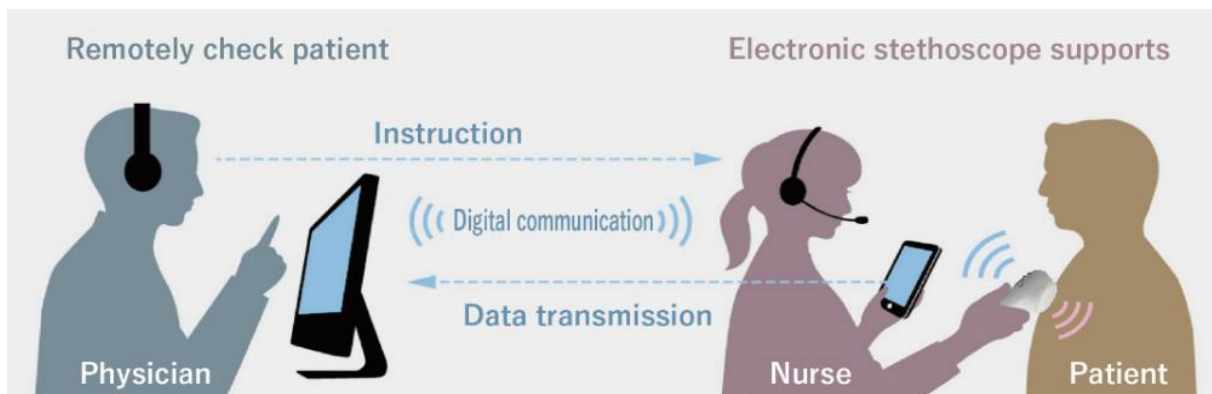
Modern medicine has been rapidly evolving. "Visiting medical care" attracts attention as one of the medical practices. Our electronic stethoscope supports physicians to practice "Tele-medicine" by sending nurses to patients' home in remote or aging areas.



JPES-01

**Electronic stethoscope contributes the tele-medicine:**

In the home medical care or visiting medical care by nurses or caregivers, they perform the vital check of the patient. If they observe any abnormalities, they can send digital data through PC, tablet or smart phone to the physicians in remote area and ask for their diagnosis.



**Auscultation sound can be recorded, replayed and transmitted:**

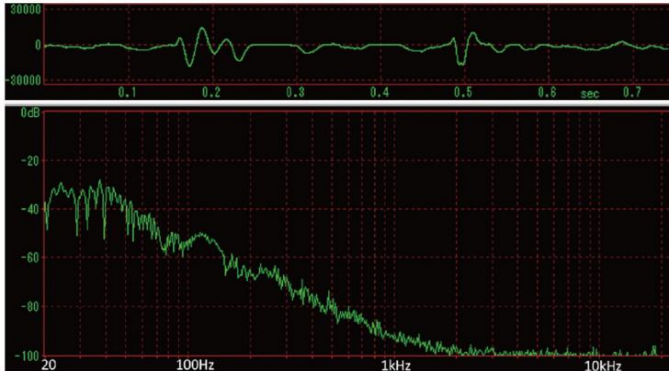
The auscultation sound transmitted to the terminal by the built-in wireless system (2.4GHz) can be recorded and replayed with audible devices such as earphone or headphone we recommend. Those digital data can be used for physician's diagnosis.

**Fine biological sounds can be caught:**

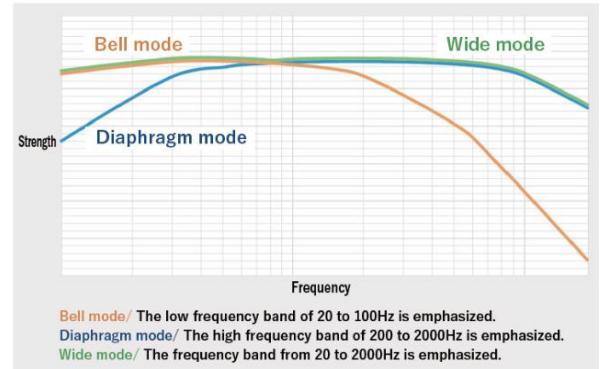
By using piezoelectric film in which acoustic impedance is close to water (living organism), excellent sounds of fine vibration in the body can be caught. Anybody can check heart sound, lung sound, arterial sound and intestinal sound by changing frequency mode.

## High-sensitive sensor is built-in:

Ultra sensitive sensor using piezoelectric film and electrical amplification enables high quality audible sound.



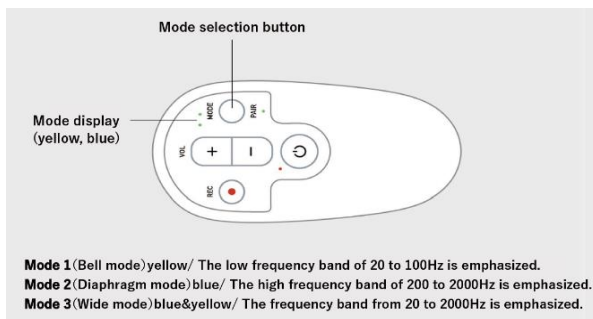
Stethoscope recording sample (Above chart: Recorded sound data, Below chart: Frequency analysis result)



Frequency mode switching sample

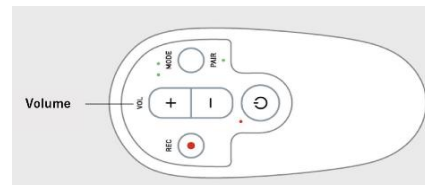
## Selection of frequency:

Frequency can be selected from 3 different modes by pushing mode button.



## Volume adjustment:

The loudness can be adjusted by pushing volume button.



## Easy to use:

This is designed to be used easily by healthcare professionals to the patients such as new born babies, children and adults. It is compact, lightweight and robust. Portable strap can be attached.

## Specifications:

Power supply Built-in Li-io battery  
 Audio output Stereo mini jack  
 Wireless communication system 2.4GHz ISB band

Supported profile SPP  
 External dimensions 115 x 52 x 37mm  
 Weight 100g



E-mail: [toiawase@milas.co.jp](mailto:toiawase@milas.co.jp)

URL: <http://www.milas.co.jp>

Mitorika Co., Ltd.

909-1 Karihara, Motoishikawa-cho

Mito, Japan 310-0843

Tel: +81-29-306-7700